



Organisation
der Vereinten Nationen
für Bildung, Wissenschaft
und Kultur



• Harz - Braunschweiger
• Land - Ostfalen
• UNESCO
• Global Geopark

Landmark 14

Huysburg Monastery



 **GEO PARK**®
Harz . Braunschweiger Land . Ostfalen

Harz



Organisation
der Vereinten Nationen
für Bildung, Wissenschaft
und Kultur



Harz - Braunschweiger
Land - Ostfalen
UNESCO
Global Geopark

On the 17th of November, 2015 in the course of the 38th General Assembly of the UNESCO, the 195 members of the United Nations organization agreed to introduce a new label

of distinction. Under this label Geoparks can be designated as UNESCO Global Geoparks. The Geopark Harz · Braunschweiger Land · Ostfalen is amongst the first of 120 UNESCO Global Geoparks worldwide in 33 countries to be awarded this title.

UNESCO-Geoparks are clearly defined, unique areas in which sites and landscapes of international geological significance can be found. Each is supported by an institution responsible for the protection of this geological heritage, for environmental education and for sustainability in regional development which takes into account the interests of the local population.



In the year 2004, 17 European and eight Chinese Geoparks founded the Global Geoparks Network (GGN) under the auspices of the UNESCO. The Geopark Harz · Braunschweiger Land · Ostfalen was incorporated in the same year. In the meantime, there are various regional networks, among them the European Geoparks Network (EGN). The regional networks coordinate the international cooperation.

The summary map above shows the position of all landmarks in the UNESCO Global Geopark Harz · Braunschweiger Land · Ostfalen.

1

Muschelkalk

Huysburg Monastery & Huy Region

North of Halberstadt, the Huysburg sits on one of the highest elevations of the Huy hills. The name is derived from a former Franconian military station. At the 20th of April, 997, Emperor OTTO III. signed the deed of donation, transferring the sovereign rights for the forests of the Hakel, the Huy and the Fallstein, as well as those for the Asse, Elm and Nordwald to the diocese of Halberstadt. At the site of today's abbey and parish church, Bishop BURCHARD I. ordered the construction of the first stone church, which was then consecrated in 1058. The cloister was founded in the year 1084. Under the administration of the Prussian king FRIEDRICH WILHELM III., the monastery was closed and the abbey changed to a parish church. Supported by the Polish Benedictine abbey Tyniec in Krakow, a monastery could be founded again in the year 1972, the only Benedictine abbey of the GDR. It still exists and is a stop along the "Straße



"Sargstedt" watch tower



Interior of the St. Maria Church

der Romanik" (the Romanesque Route). In the "Ekkehard-Haus", which is part of the monastery and used as a conference and guest house, guests are received under the motto "Gastfreundschaft seit 1.000 Jahren" (Hospitality for 1,000 Years). The highest elevation of the Huy rises up to 314.8 m above sea level (NHN). Similar to the Hakel and the Fallstein, the Huy belongs to a mountain range composed of Muschelkalk rocks. These hills are the result of slowly up-doming movements of Zechstein salt deposited in the deep underground.

In the 19th century, exploitable potash deposits were discovered from test wells in the Huy. In 1889, the "Gewerkschaft Wilhelmshall zu Anderbeck" began constructing the first shaft named "Wilhelmshall I". In 1895, the annual production of potash salt had already reached 112.000 tons. As the mines in the Huy area were gradually closed down from 1924 to 1926, more than 1,000 miners lost their jobs.

Hiking Suggestion: Huysburg – Sargstedter Warte (2,5 km).



Ekkehard-Haus

www.huysburg.de

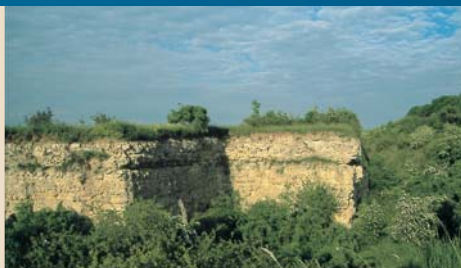
☎ 0049 39425 - 961300

2 Former quarry Fallstein near Osterwieck

Located north of the town of Osterwieck is the “Großer Fallstein”, a popular hiking area. The town is characterized by 138 half-timbered houses from the 17th century and the imposing church St. Stephani with a Romanesque west wing. There is a beautiful view from the “Bismarckturm” to the Harz and the Harz foreland. Driving from Osterwieck towards Hornburg, an old quarry can be seen to the right at Hoppenstedt. Calcareous beds from Cretaceous times (144 – 66 million years) can be divided up into four different sedimentary units. These submarine deposits contain bivalves and other fossils. In the course of the upward movements of the Zechstein beds (salt deposits), the Cretaceous “seafloor” was lifted up. Today, these beds dip 30-45° in a south-southwestern direction.



Hoppenstedt Quarry



Limestone Quarry at the Hakel

3 European Reserve Hakel near Heteborn

In the middle of a fertile agricultural landscape between Quedlinburg and the region of the “Magdeburger Börde” there rises up the wooded hill of the Hakel. Here, rocks of the Lower Muschelkalk crop out near the surface which is covered only by a thin layer of Loess from the Weichsel Ice Age. Because of rare surface waters, the area has never become overly developed. Because of its particular status – Landscape Protection Area since 1939, Wild Life Research Area and European Reserve since 1995 – scarcely any hiking trails are designated. Only one single tour to the ruins of the medieval Domburg (244,5 m above NHN) passing through deciduous forests rich in species variety can be recommended. Bedroom furniture manufactured from wood of the legendary wild cherry trees was included in the dowries of the daughters of the foresters.



4 Aschersleben Anticline Post-Mining Landscape "Harzer Seeland"

As a consequence of subterranean salt movements, the Aschersleben anticline developed, a formation which extends from Sandersleben to the northwest in "hercynian" (northwestern to southeastern) direction. In marginal depressions long expanses of peat moor could evolve which later became brown coal deposits. As of 1831, coal was excavated via shaft mining. In 1856, open cast coal production began. The principle coal stratum was 30 to 50 m thick. Here, Germany's first bucket chain excavator went into action. Around 1900, the Nachterstedt coal pit had the highest production rates in all of Prussia. It became necessary to relocate railroad tracks (1914) and even the resettlement of towns was required, Nachterstedt (beginning in 1928) and Königsau (beginning in 1965). In 1991, the no longer profitable production of coal ended. The "Harzer Seeland" is a widespread nature reserve with hiking trails, magnificent views and an adventure playground.



Adventure Playground



The "Lehof"

5 Halberstadt "Cretaceous Syncline" Lehof near Quedlinburg

We leave the city of Quedlinburg, passing the hospital and following the "Ditfurter Weg". Turning left, we soon arrive at the Lehof cliff. As early as 1934, the site was protected as a natural monument. Today, the mining sand pits extend up to the cliff, but its destruction is prohibited. Cretaceous loose sand, part of the "Involutus beds" from the late Cretaceous (Emscher), is excavated from the pits. These beds terminate the sedimentary sequence, which is underlain by Triassic, Jurassic and earlier Cretaceous rocks. It is worthwhile to climb up the cliff because of the beautiful view it offers over the northern Harz foreland. In 1930, hoards from the Bronze Age were found at the foot of the cliff. The well preserved objects from this find (among them a sword and various rings) were brought together again in 1957 in the collection of the "Schlossmuseum" (Castle Museum).



Seeland GmbH
Schadeleben

☎ 0049 34741 - 91341

www.harzerseeland.de

6

NSG (Nature Reserve) „Harslebener Berge und Steinholz“
The Great Thekenberg near Westerhausen

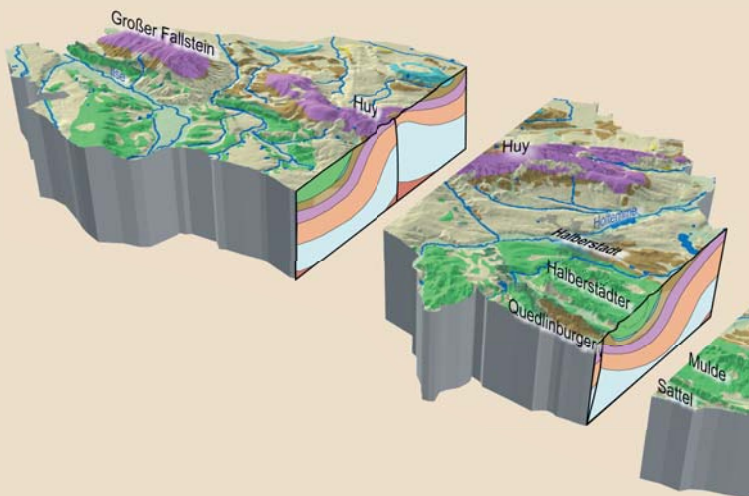
The Nature Reserve is part of an elongated cuesta (Involutus sandstone, Coniacian) along the southern flank of the Halberstadt Cretaceous syncline. To the west, towards the Great Thekenberg (205 m above sea level), the slopes become steeper and include exposures of bare rock. Engravings on the sandstones attest to the decade-long presence of soldiers from the Red Army during the Soviet occupation and the GDR era. Dry grasslands, rich in species, are predominant in the vegetation. At the foot of the Great Thekenberg, an unusual natural spectacle takes place: a large, undrained shallow lake without inflow suddenly emerges, covering an area of 12 hectares in the middle of the fields. The lake is named "Schnepfensee" (Snipe or Woodcock Lake) because of the fact that snipes flying to their breeding regions in the Arctic tundra pause to rest at this site. Also of interest are two large holes of a drainage system from the 19th century.



"Spring Adonis Rose"



The Great Thekenberg



7

View Point

Gläserner Mönch near Langenstein

Starting at the domain „Spiegelsberge“, which is situated south of the town of Halberstadt, we walk on the “Weg Deutscher Kaiser und Könige des Mittelalters” (Paths of the German Medieval Emperors and Kings) towards Langenstein, arriving after about 4 km at the beginning of the climb to the rock cliff named “Gläserner Mönch” (Glass Monk). Another stairway finally leads up to the top of the cliff, which consists of late Cretaceous sandstone. A beautiful view of the Harz and the Harz foreland is the reward for our efforts. Finally, we recommend a visit to the nearby "Langenstein-Zwieberge" memorial site. Here, in the years 1944/45, thousands of prisoners were compelled to do arduous work in this concentration camp. For the underground production of war material by the Junkers Works, the prisoners were forced to construct a tunnel system into the "Thekenberge" hills.



View of the “Gläserner Mönch”



- Quaternary
- Quaternary (fluvial deposits)
- Tertiary
- Cretaceous
- Jurassic
- Triassic (Keuper)
- Triassic (Muschelkalk)
- Triassic (Buntsandstein)
- Permian (Zechstein)
- Permian (Rotliegend)
- Waters



“Paths of the German Medieval Emperors and Kings” are described in seven leaflets.
Available over: www.harzregion.de/de/shop.html



Glossary

Landmarks are widely visible or particularly well-known ground points or places serving for a first orientation in one of the largest Geoparks of Europe giving its name to one of its part areas. Up to this point the landmarks and their surrounding area have been described so far.

Geopoints are points of special interest. The geologic history and the development of the natural and cultural landscape can be seen and conveyed on them. Geopoints of the area of one landmark are continuously numbered and can be connected to individual Geo-Routes. Geopoint 1 is always the place of the landmark.

The map section helps you to plan your personal “geo-route” in the area of Landmark 14 - Huysburg Monastery.

Osterwieck offers a still intact town with half-timbered houses, a site which served as a bridgehead for the conversion of the Saxonians under KARL DEM GROSSEN. During this time, Osterwieck was designated as “Seligenstadt” (City of the Blessed). Later, the cathedral city of Halberstadt became the residence of the diocese (804 – 1648).

*Order more leaflets
Information en français
Informatie in het Nederlands*
www.harzregion.de



8

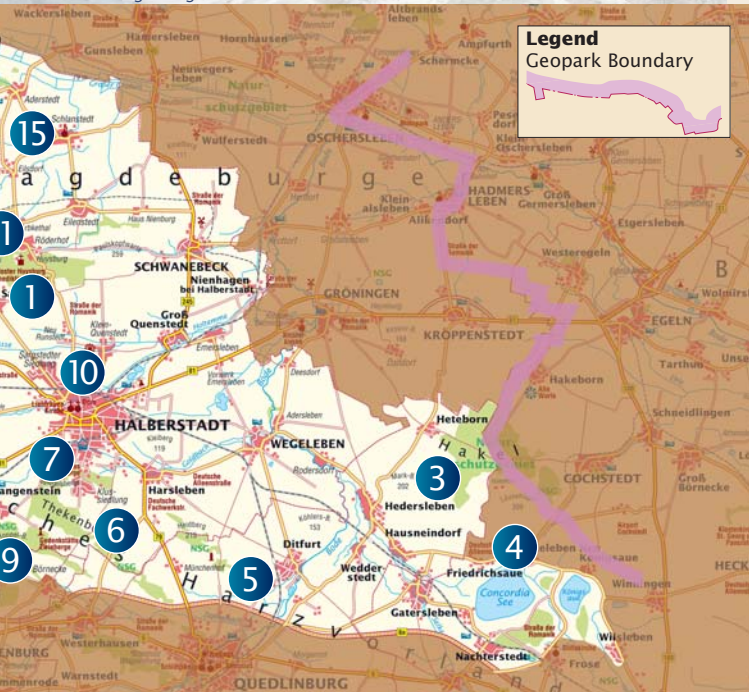
Crest of sandstone

Cave Dwellings of Langenstein

The village of Langenstein is bordered to the south by a slim crest of sandstone. In the 12th century, a castle was built here and became a favorite residence of the bishops of Halberstadt in the following two centuries. Today, only a few remains of the walls recall its existence. The hill crest provides a fantastic view northward to Halberstadt and the Huy as well as southward to the "Regenstein" (Landmark 9). In the western part of the town, we come to the sandstone cave dwellings, located along a narrow, hollowed-out path. It is not known how long these artificially constructed caves have been in existence. In any case, one of the caves was inhabited until 1916. On the "Schäferberg" there was also a "Höhlenstraße" (cave road), with cave dwellings in use until the beginning of the 20th century. The "Schäferhof" (Shepherds' Hospice) in the center of the village is today an attractive restaurant widely known for its hospitality.

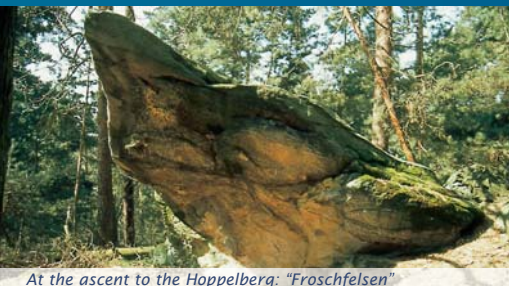


Cave Dwellings Langenstein



9 Quedlinburg Anticline Hoppelberg near Langenstein

The Hoppelberg rises 308 meters above sea level and is one of the most dominant elevations of the northern Harz foreland. Morphologically, it can be regarded as the northwestern turning point of this landscape of “cuestas”. Geologically, the Hoppelberg represents the northwest end of the Quedlinburg Anticline which is oriented in “hercynian” direction and terminates at the “Ruhmberg” near Badeborn (Landmark 15). The “Hoppelberg” consists of thick-bedded, slightly silicified sandstones from the early Cretaceous (“Neokom-Sandstein”). The “Hoppelberg” is a nature reserve partly enclosed by the historical border between the kingdom of Prussia (Langenstein) and the dutchy of Braunschweig (Börnecke). It is known as a destination attracting visitors, among whom was JOHANN WOLFGANG VON GOETHE (1749 – 1832). On several occasions, Goethe was a guest of the baroness MARIA ANTONIA VON BRANCONI (1746 – 1793) who lived in the Langenstein castle.



At the ascent to the Hoppelberg: “Froschfelsen”



Dinosaur

10 Sauria of Halberstadt Museum Heineanum Halberstadt

A stromatolite on the grounds, the skeletons of a Plateosaurus and a Plesiosaurus in the atrium: with these attractions, the visitor is welcomed to the ornithological museum on the cathedral square. In 1899, the pharmacist JOHANNES MAAK received two spinal bones found in a clay pit of Halberstadt. He anticipated what also actually occurred after a targeted search: the discovery of a skeleton of a “rudder saurus” (Plesiosaurus) from the Jurassic. At the beginning of the 20th century, additional finds from the Halberstadt clay pit include bivalves, fish, the skeleton of one of the oldest tortoises (living on land) and bones of dinosaurs. The dinosaurs are primarily representatives of species from the “Plateosaur”-group, which lived here in Keuper times (more than 200 million years ago). Other exhibition topics are “Vögel des Harzes” (Birds of the Harz) and “Vögel der Welt” (Birds of the World).



Opening hours Museum Heineanum:

Tuesday – Friday 9 am – 5 pm Saturday/Sunday 10 am – 5 pm

Guided tours on request: ☎ 0049 3941 - 551460

www.heineanum.de

11

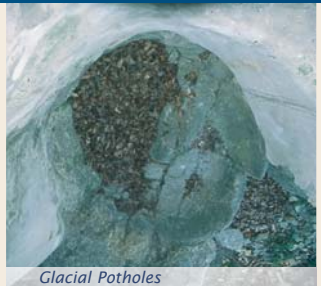
Back to the Huy

Daneil's Cave near Röderhof

We drive by car from the village of Röderhof to Mönchhai, a former potash mine later operated by the "Heeres-Munitionsanstalt" (Munition Department of the Military) in Dingelstedt and finally to serve temporarily as a concrete production plant after World War II. From here we walk to the Daneil's Cave. This structure was washed out from sandstone formations (middle Buntsandstein) during the Ice Age. The straight walls and hollowed-out spaces indicate that the cave was artificially widened and temporarily inhabited. The name of the cave goes back to the saga of the robber DANEIL, who lived in the cave in former times and once took a girl as a hostage. She had to promise – at the risk of her life – that she would not inform anyone about his residence. She entrusted her secrets to the Roland statue of Halberstadt, where an eavesdropper was able to overhear her. Thus informed, the townspeople are said to have been able to smother the robber and his entourage in fresh dough.



Daneil's Cave



Glacial Potholes

12

Pleistocene

Gletschertöpfe – Glacial Potholes near Huy-Neinstedt

The Glacial potholes, located 800 meters south of Huy-Neinstedt, are accessible on a walk from the parking area between Athenstedt and Huy-Neinstedt. There is a sign at the road side. The walk through the forest takes about five minutes. Within two minutes, take the right turn at the fork in the path and continue to the abandoned quarry named the "Hardelsbruch". Here, the glacial potholes were excavated in the course of rock exploitation. Glacial potholes are generated by the influence of ice age melt-waters which washed out the rock formations. The holes indicate the presence of Scandinavian glaciers at this site. Their origin dates back to the Saale glacial period more than 200,000 years ago. Glacial potholes are rare in regions so far removed from the Alps. Therefore, this particular geo-topo is of special interest.

13

Lower Buntsandstein

Rogenstein & Stromatolites

Layers of "Rogenstein" and Stromatolites are exposed in the former quarry „Am Herrenberg“ about 300 meters southeast of Wilhelmshall. During the early Buntsandstein times, 240 million years ago, the area was covered with epicontinental seas (probably also with limnic waters) which are characterized by intense water movement and over-saturated with carbonate. Calcium carbonate precipitated around sand grains (nuclei of crystallization). Ooids developed. When these components became too heavy, they were deposited on the sea floor. The "Rogenstein" was formed, later a building stone in great demand (for example, the Orangerie in Wernigerode). The shallow waters also contained cyanobacteria, already in existence 3,5 billion years ago. These bacteria formed colonies on the sea floor and, postmortem, generated a lithified layer which was covered by the next colony. Thus the dome-shaped stromatolites came into being.



At the outcropping



Memorial Stone at the Kiebitzdamm

14

The Glacial Valley of Oschersleben

The Kiebitzdamm near Dedeleben

The "Großes Bruch" (The Great Swamp) is an old region of borders. In the year 994, a document concerning the investiture of rights for the Quedlinburg convent to hold markets, to mint coins and to exact toll which was granted by King OTTO III. (980 – 1002) proclaims that no one be allowed to interfere "within the following borders ... from south to north, from the rivers Unstrut and Helme to the Bode and the swamp area that extends from Oschersleben to the Hornburg castle." The swamp area, part of the glacial valley of Oschersleben, is a 1 to 4 km wide low moor area which serves as a reservoir of water from the neighboring elevations. The railroad using the "Kiebitzdamm" was closed at the border between Prussia and Braunschweig after World War II. A large boulder, now a memorial stone, recalls the opening of the border on the 8th of December 1989.

15

Black Earth Soil, Sugar Beet and Seed Cultivation

Schlanstedt Castle

Since medieval times, the Muschelkalk beds from the Huy have served as important construction material for buildings and walls. The light-colored stonework still characterizes the appearance of the surrounding villages, including that of Schlanstedt. There, the lowland castle with a 25 m high Romanesque donjon (today, a viewing platform) was built by the lords of Schlanstedt in the 11th century for the protection of a route traversing the "Großes Bruch". The castle had various owners, among them the diocese of Halberstadt, the Spiegel family and the counts from the Regenstein. From 1836 until 1946, the domain was rented by Prussia to the Rimpau family. In 1839, AUGUST WILHELM RIMPAU founded one of the first sugar factories in Germany. At harvest time in the fall, the fertile lands were difficult to access and, for this reason, the Rimpau and the Strube railroads were constructed (600 mm gauge, today partially museum railways).



Schlanstedt Castle



Westerburg

16

The Oldest Moated Castle of Germany

Westerburg

The site is located by an early paved path through the "Großes Bruch". This fiefdom of Halberstadt was in the possession of the counts of Regenstein until 1599. They enlarged the castle as their strongest fortification. The fortification is composed of two circular water moats with a rampart in between. The inner ward of the castle (late Gothic residence), which incorporated a 33m high Romanesque donjon, was rebuilt in the Renaissance. During this epoch, an oval-shaped access yard was constructed. The Baroque castle chapel, finished in 1681, is today a jewel thanks to the preservation of its original interior. In the 18th century, the castle was owned by Prussian princes. Eventually, the site was converted into a Prussian state domain. During GDR times, it was the residence of an agricultural production cooperative (LPG). Today, after a renovation adhering to the regulations of monument conservation, the castle hosts a luxury hotel.



Selected Points of Information

Restaurants and Accommodations

A Hotel Villa Heine
Halberstadt

www.hotel-heine.de

☎ 0049 3941 - 31400

B Landhotel Schäferhof
Langenstein

www.schaeferhof-langenstein.de

☎ 0049 3941 - 613841

C Hotel-Restaurant Waldhaus
Osterwieck

www.waldhaus-osterwieck.de

☎ 0049 39421 - 6180

D Camping am
Halberstädter See

www.camping-am-see.de

☎ 0049 3941 - 609308

E Hotel & Spa Wasserschloss
Westerburg

www.hotel-westerburg.de

☎ 0049 39422 - 9550



REGIONALVERBAND HARZ E.V.

The Regional Association Harz is a non-profit association of the following counties: Goslar, Harz, Mansfeld-Südharz, Nordhausen and Osterode am Harz. It promotes the protection of the natural environment as well as cultural life in the region. It is supported by a network of over one hundred contributing members. Its goals are realized in part within the administrative context of the Nature Parks of the Harz Region. As a corporate member of the Geopark Harz · Braunschweiger Land · Ostfalen GbR, founded in 2004, the Regional Association is responsible for the southern portion of the region. Its corporate partner in Königslutter is responsible for the northern portion. The UNESCO Global Geopark Harz · Braunschweiger Land · Ostfalen is a member of the European Geoparks Network since 2004.

Publisher: Regionalverband Harz e. V., Hohe Straße 6, 06484 Quedlinburg

☎ 0049 3946-96410, E-Mail: rvh@harzregion.de

3rd edition, 10 - 15 k

© Regionalverband Harz e. V. Quedlinburg 2016. All rights reserved.

Internet: www.harzregion.de

Authors: Dr. Klaus George, Uwe Herold & Christiane Linke

Photos: George, Kotyrba, Lerche, Linke, Mahlke

Translators: Dr. Torsten Steiger, Dr. Harriett Watts

Graphic: Dr. I. Rappsilber, Dr. M. Thomae (Landesamt für Geologie und Bergwesen Sachsen-Anhalt)

Conception: Design Office Agentur für Kommunikation, Bad Harzburg

Printing: Harzdruckerei, Wernigerode

Funded by:



SACHSEN-ANHALT



EUROPÄISCHE UNION

ELER

Europäischer Landwirtschaftsfonds für die Entwicklung des ländlichen Raums



HIER INVESTIERT EUROPA IN DIE LÄNDLICHEN GEBIETE.